



Article No.: A46016
Articlename: AZURA Online SPE System

Sensitive analytical HPLC with Online SPE sample preparation

Sensitive analytical system: Online SPE coupled to analytical HPLC

This dedicated system is specifically designed for solid phase extraction (SPE) in combination with a powerful analytical KNAUER AZURA HPLC system.

Our versatile Assistant Module ASM 2.2L with two switching valves V 4.1 and a pump P 4.1S enables an efficient online SPE to concentrate analytes prior to HPLC analysis. This results in the reduction of analysis time and sample contamination as well as in an increase of analyte yield.

Afterward, separation and analysis can be achieved with a classical KNAUER AZURA analytical system equipped with P 6.1L LPG pump, a column thermostat CT 2.1 and a multi-wavelength detector MWD 2.1L to detect up to eight different wavelengths simultaneously.

This combination allows very sensitive determination of low concentrated samples and extracts e.g. bisphenol A (BPA) from water

10

 **Hilfe**



TECHNICAL DATA

Analytical system

Application area	HPLC
Pump system	Gradient
Gradient	Quaternary LPG
Injection	Manual injection
Detector	Variable multiwavelength detection UV/VIS
Software	ClarityChrom
Pressure	862 bar
Column thermostat	Yes

SYSTEM COMPONENTS



AZURA Eluent tray E 2.1L

Article No. AZC00

AZURA® Eluent tray E 2.1L for AZURA® devices with a capacity of 6 x 1 l bottles or 4 x 2.5 l bottles or 2 x 5 l bottles, (delivery without bottles)

Type : **Eluent tray**

[Show product](#) >



Low pressure gradient HPLC pump with 4 channel degasser

Article No. APH34EA

AZURA® Pump P 6.1L (LPG), with 10 ml pump head (stainless steel), degasser and mixer (200 µl)

Max. flow rate : **10 ml/min**

Pump head materials : **Stainless Steel**

Gradient : **Low pressure gradient (quaternary)**

Pump features : **Active pulsation compensation, RFID for automatic pump head detection, Integrated pressure sensor, Purge valve (manual), Leak management, Piston seal wash**

Maximum delivery pressure [MPa] : **86 MPa**

[Show product >](#)

Set of eluent supply bottles for HPG and LPG systems incl. bottle for piston backflushing

Article No. A5324-2

Set of 4 eluent bottles 1000 ml, 1 bottle 250 ml for piston backflushing, incl. caps for eluent tubing, GL45

[Show product >](#)



Eluent waste kit for AZURA Analytical systems

Article No. A59258

Eluent waste kit for all AZURA Analytical systems, incl. filter, waste can and cap

[Show product](#) >



Customizable docking station for pumps, valves and detectors - ASM 2.2L

Article No. AY00562

Left module: Valve drive VU 4.1 - EWA04 Middle module: Valve drive VU 4.1 - EWA04 Right module: Pump P 4.1S, 10 ml, stainless steel - DPG22EA

Left module : **Valve drive VU 4.1 - EWA04**

Middle module : **Valve drive VU 4.1 - EWA04**

Right module : **Pump P 4.1S, 10 ml, stainless steel - DPG22EA**

[Show product](#) >



Multiposition valve, 12 Port

Article No. AVT53AE

Multiposition valve, 12 ports, DLC stainless steel, PEEK, 1/8", 100 bar, 1.5 mm bore size

Operated : **electrical by VU 4.1**

Port number : **12**

Positions : **Multiposition**

Material : **Stainless Steel**

Capillary connection : **1/8"**

[Show product](#) >



High-pressure injection valve, 6 Port

Article No. AVC28AC

2-position valve, 6 Port, DLC stainless steel, Vespel®, 1/16", 1200 bar, 0.3 mm bore size

Operated : **electrical by VU 4.1**

Port number : **6**

Positions : **2**

Material : **Stainless Steel**

Capillary connection : **1/16"**

[Show product](#) >



Versatile Multi Wavelength UV-Detector for Liquid Chromatography and Process Technology

Article No. ADB01

AZURA® Detector MWD 2.1L Multiwavelength detector MWD 2.1L, without flow cell 190 - 700 nm, incl. test cell

Detector type : **Variable multiwavelength detector**

Detection channels : **8 (Digital)/4 (Analog)**

Wavelength range : **190 - 700 nm**

Linearity : **> 2.0 AU at 274 nm (ASTM E1657-98)**

[Show product](#) >



Analytical KNAUER PressureProof UV Flow Cell Cartridge

Article No. AMC38

10 mm path length, 10 μ l, 1/16", 300 bar, PressureProof Flow cell cartridge for AZURA® Detector DAD/MWD

Flow cell type : **Analytical UV flow cell**

Path length : **10 mm**

Capillary connection : **1/16"**

Max. flow rate : **20 ml/min**

Flow cell volume : **10 μ l**

[Show product](#) >



Column thermostat for up to 8 HPLC columns

Article No. ATC00

Column thermostat AZURA CT 2.1 for constant temperatures and reproducible results

Temperature range : **5–85 °C**

[Show product](#) >





Eurosphere II 100-3 C18A, Column 100 x 3 mm

Article No. 10CE184E2G

Modification : **C18A**

Length [mm] : **100 mm**

Inner diameter [mm] : **3 mm**

Brand : **Eurosphere II**

Particle size : **3 µm**

[Show product](#) >



Eurosphere II 100-3 C18A, Column 30 x 4 mm

Article No. 03DE184E2G

Modification : **C18A**

Length [mm] : **30 mm**

Inner diameter [mm] : **4 mm**

Brand : **Eurosphere II**

Particle size : **3 µm**

[Show product](#) >



10 µl Sample loop

Article No. A05645

Sample loop, 10 µl, stainless steel, 0.25 mm ID

[Show product >](#)



High pressure manual injection valve, 6 Port

Article No. AVI28AC

Manual injection valve, 6 ports, DLC stainless steel, Vespel®, 1/16", 1200 bar, 0.3 mm bore size

Operated : **manual**

Port number : **6**

Positions : **2**

Material : **Stainless Steel**

Capillary connection : **1/16"**

[Show product](#) >



Mounting bracket AZURA L

Article No. A9853

Mounting bracket AZURA® L for KNAUER manual injection valves

[Show product >](#)



WiFi router, 8x GBit RJ-45 ports, for connection of AZURA devices with a PC

Article No. A64809INT

WiFi router, 8x LAN GBit RJ-45 ports, 1x WAN GBit RJ-45 port, power plug UK, US or AUS

[Show product >](#)



Chromatography Workstation for PurityChrom® and ClarityChrom®, PC with 24" monitor

Article No. A13120

Desktop PC (SFF) for PurityChrom® and ClarityChrom® with 24" monitor, English edition Windows 10 Prof. 64-bit English, Intel® Core™ i5, 8 GB RAM, 256 GB SSD, two network cards

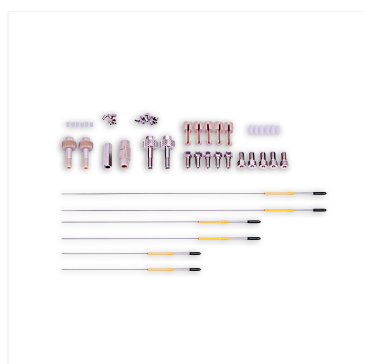
[Show product >](#)

ClarityChrom 8.7 - Workstation, autosampler control included

Article No. A1670

ClarityChrom® single instrument license for one time base

Software name : **ClarityChrom**

[Show product >](#)

Start-Up Kit with flexible, precut capillaries for analytical HPLC and UHPLC systems with 1/16" connections

Article No. AZF50

Set of precut capillaries 0.18 mm ID, fittings, connectors and adapters, yellow

[Show product](#)

Tool kit AZURA

Article No. A1033

Tool Kit AZURA® for systems with PEEK or pre-cut capillary kits

Type: **Tool kit**

[Show product](#)

DOCUMENTS AND MORE INFORMATION

AZURA System Selection Guide (V7857US)

System suggestions for analytical HPLC/UHPLC, FPLC, preparative LC and sample preparation systems. English language, V7857US

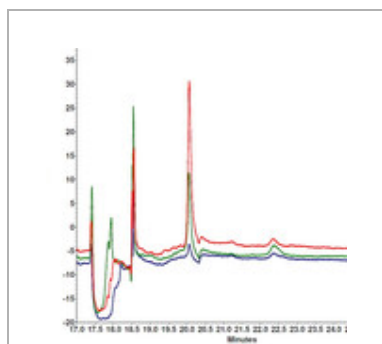
Brochure English

AZURA Analytical HPLC and UHPLC brochure

AZURA Analytical HPLC/UHPLC brochure, V7852US

Brochure English

APPLICATIONS FOR THIS PRODUCT



**Sensitive online SPE
determination of
bisphenol A in water
samples**

RELATED PRODUCTS



**Versatile Multi Wavelength
UV-Detector for Liquid
Chromatography and
Process Technology**
AZURA® Detector MWD
2.1L Multiwavelength
detector MWD 2.1L,
without flow cell 190 - 700
nm, incl. test cell
Article No.: ADB01



**Analytical KNAUER
PressureProof UV Flow
Cell Cartridge**
10 mm path length, 10µl,
1/16", 300 bar,
PressureProof Flow cell
cartridge for AZURA®
Detector DAD/MWD
Article No.: AMC38



**Eurospher II 100-3 C18A,
Column 30 x 4 mm**
Article No.: 03DE184E2G



**Eurospher II 100-3 C18A,
Column 100 x 3 mm**
Article No.: 10CE184E2G



Monitor
19-Inch LCD Monitor
Article No.: A1612



WiFi router, 8x GBit RJ-45 ports, for connection of AZURA devices with a PC
WiFi router, 8x LAN GBit RJ-45 ports, 1x WAN GBit RJ-45 port, power plug UK, US or AUS
Article No.: A64809INT



Column thermostat for up to 8 HPLC columns
Column thermostat AZURA CT 2.1 for constant temperatures and reproducible results
Article No.: ATC00



AZURA Eluent tray E 2.1L
AZURA® Eluent tray E 2.1L for AZURA® devices with a capacity of 6 x 1 l bottles or 4 x 2.5 l bottles or 2 x 5 l bottles, (delivery without bottles)
Article No.: AZC00

Certified Quality



KNAUER is known for the quality of its products and has been certified several times. We produce high-tech laboratory instruments for research, routine analysis and production for 59 years.

[See all Quality certificates](#)

In addition, we have extended documentation about all our products, including **CE Declarations of Conformity**.
[See all CE Declarations of conformity](#)

Innovation and quality - since 1962. Made in Germany.



Do you need more details or a quote?

We are happy to help you



+49 30 809727-0



sales@knauer.net

Technical data or prices are subject to change without notice. Prices may vary by country and do not include taxes, customs duties or delivery.

All trademarks are the property of their respective owners. Our general terms and conditions apply:
www.knauer.net/terms