



Article No.: SYS762103114


Articlename: AZURA Compact Prep 50 HPG

## Preparative HPLC system with high pressure gradient and manual injection for up to 50 mL/min

The AZURA® Compact Prep. 50 gradient system qualifies for fast and reliable semipreparative chromatography. The system offers outstanding gradient performance and ease of use thanks to its compact design and user-friendly MobileControl software. The system can easily be upgraded with a fraction collector or additional detectors.

Your products of interest are detected by UV and automatically collected via the fractionation valve. Pre-designed methods and cleaning steps are included in the software and can be easily adapted.

### Key Features

- Flow rate: 0.01–50 ml/min; 0.1 - 40.0 ml/min (recommended)
- Maximum system pressure: 300 bar up to 10 ml/min (30.0 MPa)
- Maximum system pressure: 200 bar from 10 - 50 ml/min (20.0 MPa)
-  **Hilfe** for sample injection via

St

- Fraction collector valve 16-Port
- Variable single wavelength UV detector (190–500 nm)
- Compatible with columns from all vendors
- Intuitive MobileControl software
- System suitable for cold room usage
- Easily upgradeable to an automatic sampling system



*AZURA Compact Prep 50 HPG*

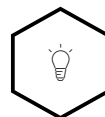
## KEY FEATURES



Customized solutions



Flexible and modular



Configure your system  
from injection to  
collection



Made in Germany



Certified quality  
management

## TECHNICAL DATA

### System specification

<b>System type</b>	Lab
<b>Gradient</b>	hpg
<b>Max. flow rate</b>	50 ml/min
<b>Maximum delivery pressure [MPa]</b>	30 MPa
<b>Maximum delivery pressure [psi]</b>	4350 psi
<b>Maximum delivery pressure [bar]</b>	300 bar
<b>Typical column dimension</b>	20 x 250 mm (5 µm)
<b>Detector</b>	Variable single wavelength detection UV/VIS
<b>Injection</b>	automatic injection
<b>Fractionation</b>	multi-position valve
<b>Software</b>	Mobile Control





## SYSTEM COMPONENTS

---



### **AZURA Eluent tray E 2.1L**

Article No. AZC00

AZURA® Eluent tray E 2.1L for AZURA® devices with a capacity of 6 x 1 l bottles or 4 x 2.5 l bottles or 2 x 5 l bottles, (delivery without bottles)

Type : **Eluent tray**

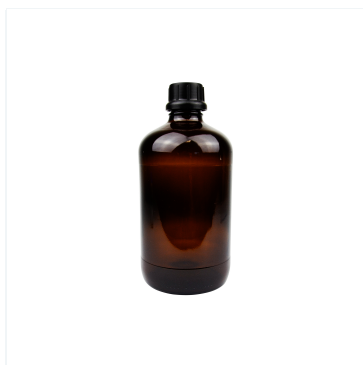
[Show product](#) >



### **Bottle for Piston Back Flushing**

Article No. A2056

250 ml bottle for piston back flushing

[Show product](#) >

### Set of eluent supply bottles

Article No. A70037

Set of eluent supply bottles, 3 x 2.5 L brown glass bottles (borosilicate glass) with special round bottom for minimal eluent remainder, for preparative HPLC/FPLC, includes screw-type cap

[Show product](#) >

### High pressure gradient semi-preparative HPLC pump

Article No. APH38FA

AZURA® Pump P 6.1L (HPG), without degasser, with 50 ml pump head

(stainless steel) and mixer (200 µl)

Max. flow rate : **50 ml/min**

Pump head materials : **Stainless Steel**

Gradient : **High pressure gradient (binary)**

Pump features : **Active pulsation compensation, RFID for automatic pump head detection, Integrated pressure sensor, Purge valve (manual), Leak management, Piston seal wash**

Maximum delivery pressure [MPa] : **30 MPa**

[Show product](#) >



## Customizable docking station for pumps, valves and detectors - ASM 2.2L

Article No. AY00593

Left module: Valve drive VU 4.1 - EWA04 Middle module: UV detector UVD 2.1S - EDA03XA Right module: Valve drive VU 4.1 - EWA04

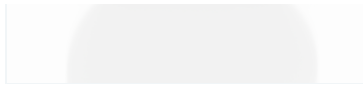
Left module : **Valve drive VU 4.1 - EWA04**

Middle module : **UV detector UVD 2.1S - EDA03XA**

Right module : **Valve drive VU 4.1 - EWA04**

[Show product](#) >





## Multi-injection valve, DLC stainless steel

Article No. AVN96AE

DLC stainless steel multi-injection valve for more sophisticated separation tasks. (1/16", 500 bar, 0.75 mm bore size)

Operated : **electrical by VU 4.1**

Port number : **8**

Positions : **Multiposition**

Capillary connection : **1/16"**

Max. pressure [bar] : **500 bar**

[Show product](#) >



## Multiposition valve, 16 Port

Article No. AVQ66AE

Multiposition valve, 16 Port, DLC stainless steel, PEEK, 1/16", 500 bar, 0.6 mm bore size

Operated : **electrical by VU 4.1**

Port number : **16**

Positions : **Multiposition**

Material : **Stainless Steel**

Capillary connection : **1/16"**

[Show product](#) >





## AZURA L tubing guide

Article No. A5329-3

Sorting of 1/8" and 1/16" tubings single-sided of AZURA L devices – 2 rows with each 16 holes

[Show product](#) >



## Display software for AZURA devices with data acquisition incl. tablet

Article No. A9608

Mobile Control Chrom with data acquisition including tablet and mount

Software name : **Mobile Control Chrom - display software for AZURA devices with data acquisition**

[Show product](#) >

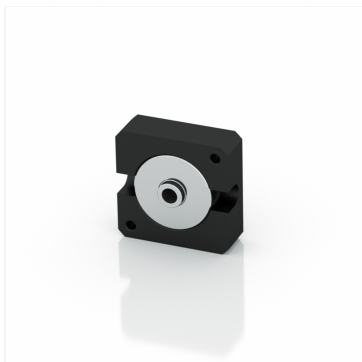


### WiFi router, 8x GBit RJ-45 ports, for connection of AZURA devices with a PC

Article No. A64809INT

WiFi router, 8x LAN GBit RJ-45 ports, 1x WAN GBit RJ-45 port, power plug UK, US or AUS

[Show product](#) >



### Semi-preparative 3 mm UV Flow Cell

Article No. A4042

3 mm path length, 2  $\mu$ l, 1/16", stainless steel, classical KNAUER flow cell

Flow cell type : **Semi-preparative UV flow cell**

Path length : **3 mm**

Capillary connection : **1/16"**

Max. flow rate : **50 ml/min**

Flow cell volume : **2  $\mu$ l**

[Show product](#) >



**Classical Start-Up Kit for semi-prep HPLC systems with 1/16"  
connections and 50 - 100 ml/min**

Article No. A9849-1

AZURA® start-up kit 1/16", stainless steel, semi-prep, capillary kit

[Show product >](#)





### **Tool kit AZURA**

Article No. A1033

Tool Kit AZURA® for systems with PEEK or pre-cut capillary kits

Type : **Tool kit**

[Show product >](#)



**1 ml Sample loop**

Article No. A0567

Sample loop, 1000 µl, stainless steel, 1 mm ID

[Show product >](#)



### **Luer Adapter to 10-32, ETFE**

Article No. A1980

Luer Adapter to 10-32, ETFE, female Luer to male 10/32 threads for injection, simply screw the adapter in the port of your injection valve

[Show product >](#)

---



**Luer-Lock glass syringe**

Article No. A0573

Luer-Lock glass syringe, 10 ml

[Show product >](#)

---

## ACCESSORIES & SPARE PARTS



**Installation Box Kit**  
Installation Box Kit, Box for  
small parts, KNAUER file  
folder and support sticker

**Article No.: A9862**



**Bottle for Piston Back  
Flushing**  
250 ml bottle for piston  
back flushing

**Article No.: A2056**



**Air Sensor**  
Air sensor (1/16") for  
AZURA® Bio LC with one  
air sensor and wiring for  
up to 4 air sensors

**Article No.: A70092**



**Additional Air Sensor**  
Additional air sensor for  
AZURA® Bio LC for 1/16"  
tubing

**Article No.: A70092-1**



### **Air Sensor**

Air sensor (1/8") for AZURA® Bio LC with one air sensor and wiring for up to 4 air sensors

**Article No.: A70093**



### **Additional Air Sensor**

Additional air sensor for AZURA® Bio LC for 1/8" tubing

**Article No.: A70093-1**



### **Distribution Box 24 V for auxiliary equipment**

Power Supply: Distribution Box 24 V for 6 devices like air sensor, external pressure sensor, IFU 2.1 LAN

**Article No.: AZS80SA**



### **Multi Column Base**

Multi Column Base including bosshead and clamps, serves as a holder for up to 3 columns with inner diameter up to 50 mm, especially made for preparative column solutions

**Article No.: A0070A**



**AZURA Click mounting rail**  
to attach IFU 2.1 LAN, air  
sensors, pressure sensors,  
pH flow cells, or the  
AZURA® Organizer to  
AZURA® L devices

**Article No.: A70089**



**Product riser AZURA**  
Product Riser AZURA®:  
Set of 4 feet that lift the  
device to a height of 28  
mm for easy handling of  
the waste tube of the  
drainage system - for L  
devices before 2018

**Article No.: A9860**

## DOCUMENTS AND MORE INFORMATION

### AZURA Präparatives System Installationskarte DE (V6800)

Manual    German

---

### AZURA Preparative HPLC brochure

AZURA Preparative HPLC brochure, V7820US

Brochure    English

---

### KNAUER Prep. LC Systems

Brochure    English

---

### Peak recycling

Peak recycling elongates the separation length of the column. Technical note, VTN0001

Application    English

---

### Recycle your peaks – A comparison of two recycling methods

Technical note, VTN0007

Application    English

---



## RELATED PRODUCTS



**Chromatography  
Workstation for  
PurityChrom® and  
ClarityChrom®, PC with  
24\"**

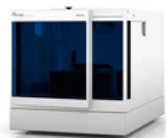
Desktop PC (SFF) for  
PurityChrom® and  
ClarityChrom® with 24\"  
monitor, English edition  
Windows 10 Prof. 64-bit  
English, Intel® Core™ i5, 8  
GB RAM, 256 GB SSD, two  
network cards



**PurityChrom® Basic  
Basic License for one  
system**

**Article No.: A2650**

**Ar 20**



**Robust Autosampler for  
preparative LC**  
AZURA® Autosampler AS  
6.1L preparative HPLC  
autosampler, 350 bar  
**Article No.: AAA40AA**



**Tempered Autosampler for  
preparative LC**  
AZURA® Autosampler AS  
6.1L preparative HPLC  
autosampler, 350 bar, with  
sample cooling/heating  
**Article No.: AAA41AA**



**Fraction Collector Foxy R1**  
Fraction collector Foxy®  
R1 for 1/16" or 1/8" tubing

**Article No.: A59100**



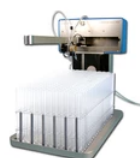
**Fraction Collector Foxy R2**  
Fraction collector Foxy®  
R2 for 1/16" or 1/8" tubing

**Article No.: A59102**



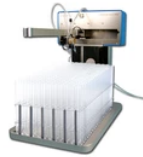
**Fraction Collector Foxy R2**  
Fraction collector Foxy®  
R2 for 1/4" tubing

**Article No.: A591021**



**Fraction Collector  
LABOCOL Vario-4000 Plus**  
Fraction collector  
LABOCOL Vario-4000 Plus  
for 1/16" or 1/8" tubing

**Article No.: A591023**



**Fraction Collector**  
**LABOCOL Vario-4000 Plus**  
Fraction collector  
LABOCOL Vario-4000 Plus,  
for 1/4" tubing  
**Article No.: A591026**

## RELATED FAQs

### **How to connect the pump with the eluent?**

Dosing

---

### **How to avoid air entering the FPLC system?**

FPLC | Troubleshooting

---

### **How to increase the productivity and improve the efficiency in preparative chromatography?**

Pumps | P6.1L | Preparative HPLC

---

### **How much detection does a preparative HPLC system need?**

Detection | Preparative HPLC

---

## Can multiple single wavelength detectors be used in PurityChrom?

PurityChrom

---

## Where can I arrange my bottles for buffers, eluents and samples?

Preparative HPLC | Troubleshooting

---

## What is a delay volume?

FPLC | PurityChrom

---

## Certified Quality



KNAUER is known for the quality of its products and has been certified several times. We produce high-tech laboratory instruments for research, routine analysis and production for 59 years.  
[See all Quality certificates](#)

In addition, we have extended documentation about all our products, including **CE Declarations of Conformity**.  
[See all CE Declarations of conformity](#)

**Innovation and quality - since 1962. Made in Germany.**



## Do you need more details or a quote?

We are happy to help you



+49 30 809727-0



sales@knauer.net

Technical data or prices are subject to change without notice. Prices may vary by country and do not include taxes, customs duties or delivery.

All trademarks are the property of their respective owners. Our general terms and conditions apply:  
[www.knauer.net/terms](https://www.knauer.net/terms)